

CLEARING THE GROUND

STUDY CIRCLES

JUNE
30
15:00-17:00
(GMT+8)

CLEARING THE GROUND OF CRITICAL REALISM

JOHNNY GO **MINGYU SEO**
PHILIPPINES KOREA

JULY
01
15:00-17:00
(GMT+8)

CRITICAL REALISM AND SOCIAL SCIENTIFIC RESEARCH

BENITO TEEHANKEE **TONE SKINNINGRUD**
PHILIPPINES NORWAY

CRITICAL REALISM NETWORK - ASIA
critrealap.net

1



2

CLEARING THE GROUND

STUDY CIRCLES

Why Study Circles and not the usual conference?

Our members have expressed their preference to gather together to clarify their understanding of the most essential concepts of critical realism. We already have the annual conferences organized by the IACR (International Association for Critical Realism), where critical realists share their insights and research with one another.

What we would like to do amongst ourselves is to undertake John Locke's task of "clearing the ground" and "removing the rubbish"--a humble but necessary task to a deeper understanding of critical realism.

Our Study Circles will be an opportunity for us to ask our questions and think-out-loud among fellow critical realists, to learn together and in the process, build our Critical Realism Network here in Asia.

3

JUNE

30

15:00-17:00
(GMT+8)

CLEARING THE GROUND OF CRITICAL REALISM

A basics introduction and refresher to clarify concepts in basic critical realism, DCR, and metaReality

JOHNNY GO (PHILIPPINES)

MINGYU SEO (KOREA)

JULY

01

15:00-17:00
(GMT+8)

CRITICAL REALISM AND SOCIAL SCIENTIFIC RESEARCH

Concrete guidelines, suggestions for using Critical Criticism as metatheory for research

BENITO TEEHANKEE (PHILIPPINES)

TONE SKINNINGRUD(NORWAY)

4

JUNE
30
15:00-17:00
(GMT+8)

CLEARING THE GROUND OF CRITICAL REALISM

JOHNNY GO
PHILIPPINES

MINGYU SEO
KOREA

**Original CR
Latest Evolution**

Two Brief Presentations Conversations

5



Why Critical Realism for Me?

“The Devil and the Blue Sea”

POSITIVISM:
CERTAINTY but REDUCTIONIST

RELATIVISM:
LIMITS OF HUMAN KNOWING
but COMPROMISED THINKING

6

4 REASONS IDEAS



7

INTRANSITIVE

Reality is independent of human knowing.

#1

~~Relativism~~

JUDGMENTAL RATIONALITY
= Ontological Realism
+ Epistemic Relativism

Human knowing is limited and relative.

TRANSITIVE

8

STRATIFICATION

Reality is more than what we can perceive.
 Reality includes not only our **Experiences**,
 but also unexperienced **Events** and
 unactualized **Causal Structures**.

~~Positivism~~

REALITY
 > Perceptible
 = Causally Efficacious

#2

9

#3

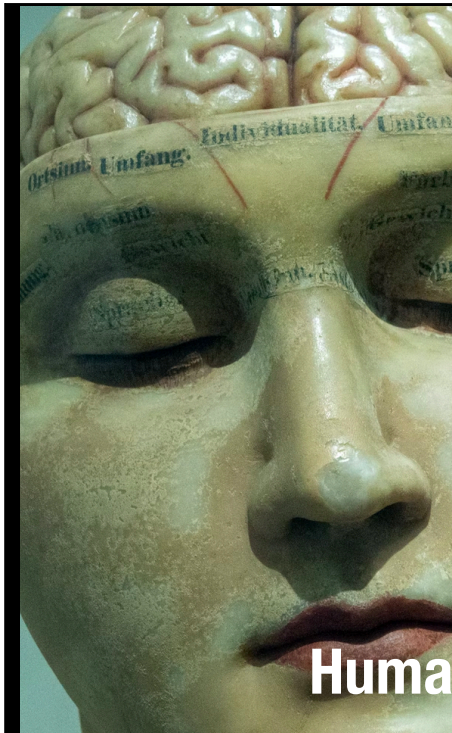
OPEN SYSTEM

Outside the laboratory,
 causes do not always produce
 events or experiences
 because other causes can intervene.

Causes operate
 as **TENDENCIES**.

~~Determinism~~

10



#4

EMERGENCE

Complex causes are irreducible to more basic ones, are causally efficacious, and are real.

~~Reductionism~~

Human agency is causally efficacious.

INTRANSITIVITY STRATIFICATION OPEN SYSTEM EMERGENCE

*Clears the ground for our discourse.
Guides our research.*

Relativism Positivism Determinism Reductionism

JULY

01

15:00-17:00
(GMT+8)

CRITICAL REALISM AND SOCIAL SCIENTIFIC RESEARCH

Concrete guidelines, suggestions for using Critical Criticism as metatheory for research

BENITO TEEHANKEE (PHILIPPINES) **TONE SKINNINGRUD**(NORWAY)